

Lines from Linda

LINDA AYERS TURNER KNORR



Life's a Bed of Roses for Little Rock's Donald and Betty Henderson.

Winding and skidding down an icy road in December of 1992, I feared our car was headed for disaster! Clint Harris was my backseat companion. Our car was expertly guided by Don Henderson with gentle shrieking advice being offered by his wife Betty and me.

The Hendersons were members of a political party politely proclaiming that their city was home to our nation's newly elected President William Jefferson Clinton.

(Conservatives in Arkansas could sigh a little relief on the homefront as their first couple would now move to Washington.....)

It seems that the words "good ride" were repeated more than once at the Arkansas Kennel Club Dog Show earlier that December day. Southerners with a long history in the Democratic Party now reflect the convictions of the Republican Party.....It's a tough position to handle for many.

Our foursome had just attended a lovely dinner party at the home of Dr. and Mrs. Richard Dixon. All decked out for the Christmas Season the Dixon's residence was located on a high bluff with a magnificent view of the Arkansas River and the twinkling of Little Rock's city lights.

Lovely little Champion Schipperkes bred and shown so suc-

cessfully by Richard and Nina Dixon rested by the Christmas tree as Clint and I retold our old stories for the umpteenth time. To all-rounder Clint Harris I am still the little blonde headed girl with the Collie showing under him in Jr. Showmanship. To me he is that great looking professional handler with the handsome dark brown flattop.

Joanie Harris' great golfing accomplishments were then the topic of conversation until we begin our slide down the hillside.

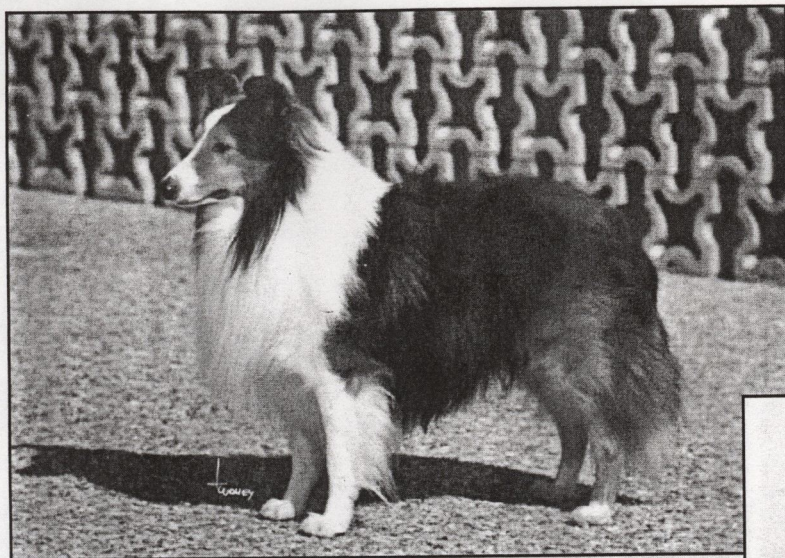
You must have heard and read about the Little Rock family with the four million red lights adorning their home for the holidays. Well seeing the Christmas lighting display of Mr. and Mrs. Jennings Osborne was our reward for braving out the ride down the ice covered road. The display involved so many large moving items such as Santa Claus streaking across the sky, a lighted world globe the size of an automobile erected two stories high and numerous manger scenes. A full time crew of twelve electricians worked four months using two large cranes to assemble this elaborate production. Needless to say normal life for the neighbors ceased to exist and tensions called for controversy attracting nationwide news coverage.

Representatives from Disney

World traveled to the Arkansas Capitol and persuaded Mr. and Mrs. Osborne to use their display so many more people might have a chance to enjoy it's glow. You too can see it in Orlando this Christmas!

Most of the Donald R. Henderson's thirty-eight years of married life has included their involvement in the sport of purebred dogs. Success came early on in 1965 when Betty and Don began to exhibit. They were fortunate enough to acquire an outstanding dog, American and Canadian Champion Cee Dee's Squire C.D. with the guidance of experienced Detroit Collie and Sheltie friends, the Hendersons finished "Squire's" American Championship when he was nine months old. By the time "Squire" was eleven months old, he had acquired his Canadian Championship and along the way, he had won an All Breed Best in Show. In the early 80's and again in the 90's the American Shetland Sheepdog Association elected Henderson as its President. Now approved for most of the Herding Group, Don still feels deeply honored to have been privileged to judge the Shetland Sheepdog National Specialty Shows in the United States and Canada.

Presidential election time rolls around every four years.....Yet it



The Henderson's American and Candian Champion Cee Dee's Squire, CD. who won an all-breed Best in Show before his first birthday.

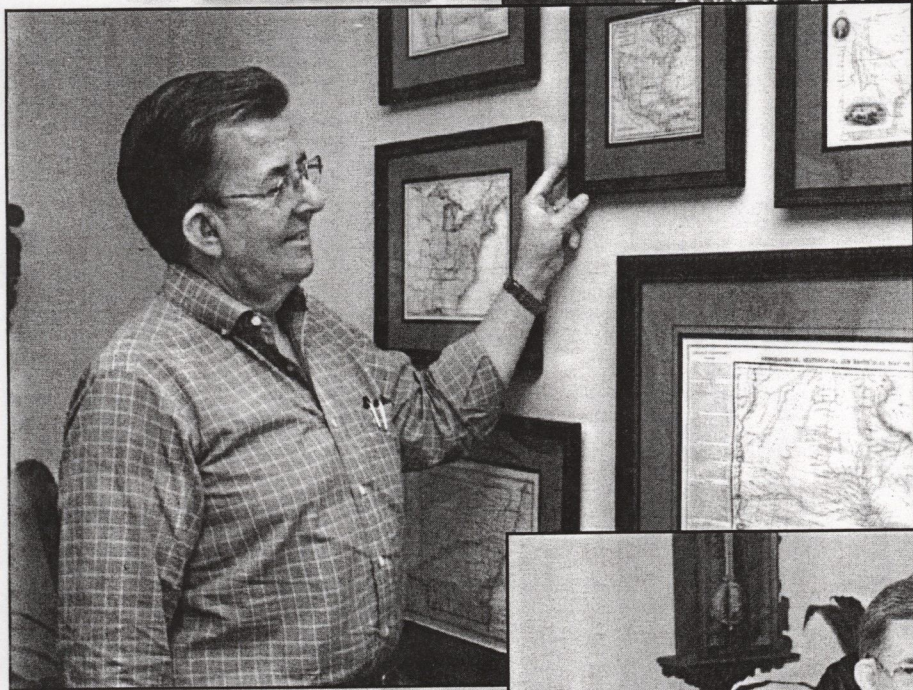
You must have heard and read about the Little Rock family with the four million red lights adorning their home for the holidays...

Betty Henderson is comfortable judging roses or puppies.



Drew Henderson at age 10 winning Best Junior Handler with Ch. Cee Dee's James Bowie, CD.

*Judge Don Henderson
awarding Winners Bitch at the
American Shetland Sheepdog
National Specialty in 1988.
The handler is Steve Barger.*



*Antique maps are prized
possessions of Donald and
Betty Henderson.
Here Don admires a few.*

*Sedgwick's Senior Vice President
looks over a few of his
antique fountain pens in his
Little Rock office.*



seems like only yesterday when Don Henderson called to invite me to judge at the Arkansas Kennel Club Show on December 4, 1992.

This summer my husband, Jim and I were in San Diego as the Democrats gathered for their National Convention. Arkansas' former Governor turned President was again nominated to run for re-election.

We traveled to Long Beach for the wedding of our Afghan Hound friends Robert and Docia Thoes' wedding which took place during the western states' power outage. From their hotel suite (that's an entire story in itself) we watched the fireworks form the Queen Mary where Ross Perot was receiving the nod from his reform party followers. **REMEMBER ABOVE ALL ELSE IT IS ALWAYS WE JUDGES WHO "DOLE" OUT THE RIBBONS.**

As a young man, dogdom's Don Henderson was a page in the U.S. House of Representatives for two years. He attended the United States Capitol Page School during his sophomore and junior years of high school. At that time the page school was located in the Library of Congress. At the age of seventeen, Donald was in charge of all the pages at the Democratic National Convention in which Adlai Stevenson was nominated. During his tenure as a page, he had the good fortune to work rather closely with numerous historical figures such as John F. Kennedy, Richard Nixon, Lyndon Johnson and Gerald Ford. Don was present when General MacArthur made his famous "Old Soldiers Never Die..." speech.

The Clintons were still occupying the Arkansas State House during my visit in December.

Betty and Don took me to a reception at the home of Sheltie enthusiast Glen and Patti Escola. Talk about real local heroes....Glen is the head football coach at the high school.

Next we visited the Governor's Mansion and the old State House which had been the site of all the

election night festivities when Governor Clinton was elected President of the United States. Then we drove on to the historic Capitol Hotel which has one of the few elevators in the world outfitted with a sofa.

Cathy and Drew, the Henderson's children grew up sharing their parents' enthusiasm in the family sport. Both enjoyed exhibiting their Shetland Sheepdogs in Junior Handling. By using the initials of their offspring's names, the Henderson's came up with their kennel name Cee Dee's.

Tragically, Cathy passed away while she was a college student. Drew now enjoys his parents other interests.

During the many years of service devoted to the Arkansas Kennel Club as President and Show Chairman, Don was also President and Show Chairman for the Central Arkansas Rose Society. Currently our versatile Herding Group judge is Show Chairman for the Arkansas Iris Society.

The Hendersons reside on twenty-five acres of paradise just outside Little Rock.

Betty is heavily involved in flower arranging and is a highly sought after flower show judge. Currently she is President of the Arkansas Flower Judges Council. Her own rose garden includes over one hundred different varieties of miniature roses and approximately two hundred varieties of hybrid tea roses. Flowers attract humming birds. At any given time the Hendersons can easily count at least forty of the tiny birds chirping around their twelve feeders. If this precious, laid back image does not fill your mind with pleasure, let me tempt you with visions of the Hendersons forty foot long water garden which is filled with tropical water lilies and Japanese Koi.

Southern Living Magazine's feature story was on the Arkansas Governor's Mansion Christmas decorations the year Betty Henderson was in charge of the project. Bill and

Hillary were delighted with her talents.

For the past twenty-one years Don Henderson has been associated with Sedgwick Insurance Company as their senior vice president. The Hendersons are active members of the First Christian Church of Little Rock where Don is an elder and stewardship chairman.

As an avid collector of antique fountain pens and antique maps, traveling to dog judging assignments affords Don opportunities for exploring trips to antique shops to look for treasures. His collection of fountain pens presently numbers around two hundred.

While in Vancouver to judge the Canadian Shetland Sheepdog National Specialty Show, Don used his spare time to locate an antique map dealer where he struck gold. He discovered some interesting two hundred year old maps. One shows the northwest part of Canada as "unknown." Because they were such early maps, several of them have numerous errors. These mistakes greatly enhance their collectible value.

A favorite map shows an incorrect California coastline while another pictures Chicago as being a considerable distance from the state of Illinois and Lake Michigan.

No matter who is elected President of the United States this month, I know of one very special Little Rock pair who will find themselves strolling along winding trails spending golden time in their own backyard. Picture them surrounded by deep woods in the evening sniffing the pleasant smell of seasonal flowers while watching their Koi swim along the lilies underneath their waterfall.

Betty and Don are sterling examples of a couple for which slowing down would be unthinkable. Their spirits soar as they view a fine fall sunset full of memories.

Sigh! Yes, life is a bed of roses for the Donald Hendersons!

Linda Ayers Turner Knorr